



THE KENYA NATIONAL EXAMINATIONS COUNCIL

SCHOOL BASED ASSESSMENT

SCIENCE AND TECHNOLOGY

Grade 4 – 2024

LEARNER'S NAME: _____

ASSESSMENT NUMBER: _____ **DATE:** _____

SCHOOL NAME: _____

INSTRUCTIONS TO LEARNERS

1. *This paper consists of 14 questions.*
2. *Answer ALL the questions in the spaces provided.*

The grid below to be filled by the teacher after marking the learners' work. During uploading, the teacher to upload the scores per task.

Tasks	Living Things	Matter	Force and Energy
Question Numbers	1 - 5	6 - 12	13 -14
Max. Score	7	13	5
Learner's Score			

This paper has 6 printed pages

TURN OVER

Answer ALL the questions in the spaces provided.

1. The picture below was drawn by Jane to show the direction a plant grows when placed next to a window.



The characteristic of plants Jane was demonstrating is that plants _____ (1 mark)

2. The picture below shows an animal with its young ones.



The characteristic of animals as living things shown by the picture is that animals _____ (1 mark)

3. The pictures below are of two animals.



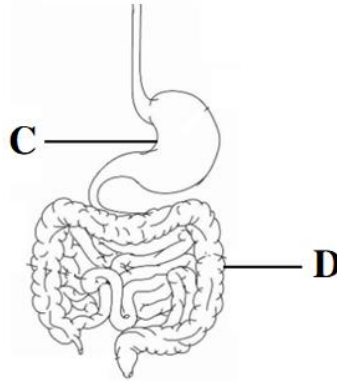
A



B

Which one of the animals is an invertebrate? _____ (1 mark)

4. The drawing below shows the human digestive system with the parts labelled **C** and **D**.



Identify the parts labelled **C** and **D**

C _____ (1 mark)

D _____ (1 mark)

5. Learners made the following postures during a lesson on a healthy digestive system.

Being able to pass stool comfortably.	Producing watery stool .	Feeling stomach ache after eating food.
--	---------------------------------	--

(a) Tick **only one** posture that shows a healthy digestive system. (1 mark)

(b) Explain your answer in 5 (a) (1 mark)

6. The picture below shows waste collection bins in a primary school.



(a) Before disposing the waste into the collection bins, the primary school considers

_____ and _____ (2 marks)

- (b) Name **one** personal protective device that can be used for safety when handling the solid waste to be disposed into the waste collection bins. (1 mark)

7. The picture below shows a waste collection bin in a certain school.



- List **two** examples of waste that should be dropped into the bin. (2 marks)

8. The picture below shows an activity that took place after washing the cloths.



- (a) The clothes are in _____ state of matter. (1 mark)
- (b) Water in the wet clothes is in _____ state of matter. (1 mark)
9. The size of the balloon shown in the picture below increased when air was blown into it.



State the characteristic of gases demonstrated by the activity.

(1 mark)

10. The pictures were drawn by a Grade 4 learner during a lesson on water conservation.



(a) Tick the picture that shows responsible use of water at home. (1 mark)

(b) Give a reason for your answer in (a) above.

_____ (1 mark)

11. Use lines to match the following activities with the correct method of conserving water.

Activity	Method of conserving water	
Jane uses laundry water to mop the floor.	Recycle	
Water company treats wastewater for use at home.	Reuse	
	Reduce	(2 marks)

12. The pictures below were used by Grade 4 learners to demonstrate a characteristic of liquids.



The characteristic of liquids being demonstrated is that liquids have

_____ (1 mark)

13. The picture below shows a goalkeeper catching a ball during a football match.



(a) The effect of force on the ball is that force can _____ (1 mark)

(b) Name the force that made the goalkeeper to fall to the ground with the ball.

_____ (1 mark)

14. The picture below shows a fire.



(a) State how one would keep safe when handling the fire. (1 mark)

(b) State **one** domestic use of

(i) light from the fire _____ (1 mark)

(ii) heat from the fire _____ (1 mark)